

Soon My Apartment

Will Swallow Me Whole

for Hypercube

Gunter Gaupp

2020

WRITTEN

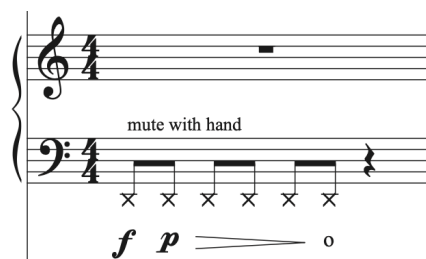
October 2020
Memphis, TN

for

Tenor Saxophone
Electric Guitar
Piano
and
Vibraphone

4.5 minutes in duration

One repeated percussive gesture calls for the player to mute the sounding string with their free hand. In these instances, x noteheads are used to depict the desired pitch.



Vibraphone

Throughout the piece, x noteheads are used to denote muted tone bars. Here, the player should use a free hand to mute the designated tone bar such that the resulting sound has a sharp attack with nearly no sustain.

Additionally, the player should feel free to incorporate extra pedal to amplify the resonance of extended techniques across the ensemble.

Soon My Apartment Will Swallow Me Whole

Gunter Gaupp

A ♩ = 80

Tenor Sax

Electric Guitar

Piano

Vibraphone

freely pluck, strum, tap and scrape strings inside piano

p

mute with hand

slowly scrape string with guitar pick

f p \rightarrow \circ

f p \rightarrow \circ

5

T. Sx.

E. Gtr.

Pno.

Vib.

f

mute with hand

ff

ped.

9 *bright but reserved*

T. Sx. *p*

E.Gtr. thump fist against body to generate sound L.V. thump fist against body to generate sound *mp* *pp*

Pno. slowly scrape string with guitar pick

Vib.

13

T. Sx. *p* *ff*


E.Gtr. L.V. very slow pick slide *mp* *mp* *bright, full tone*


Pno. mute with hand *ff* *f p* *o*

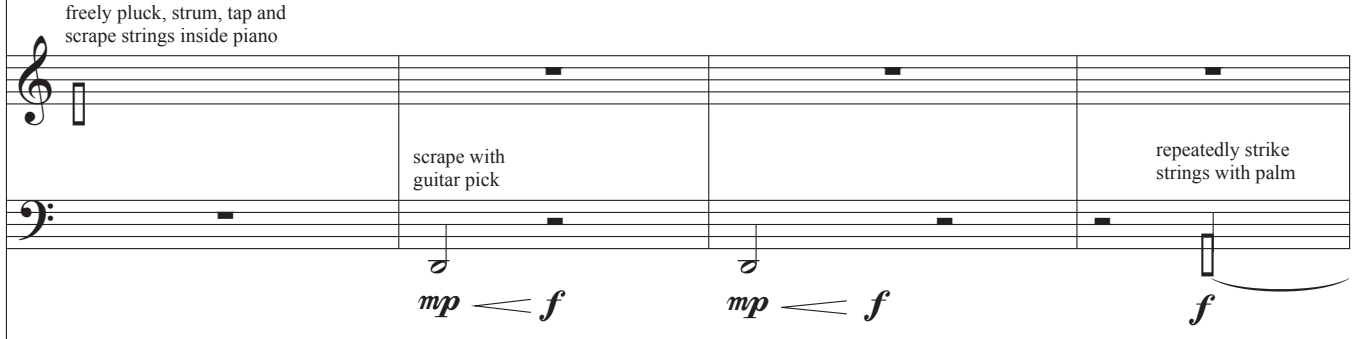
Vib. *p* *Lead.*

8

17


T. Sx. 

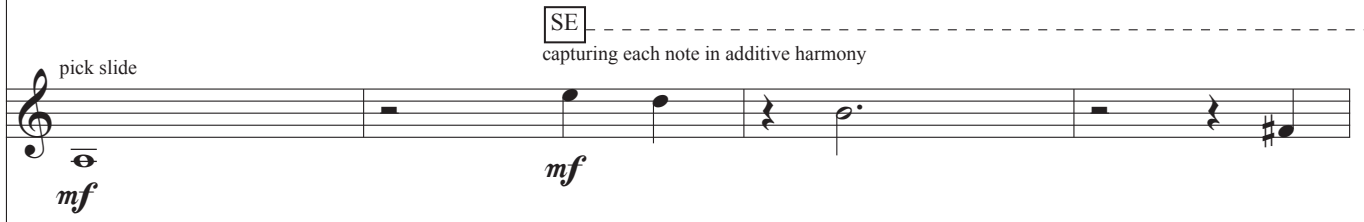
E. Gtr. 

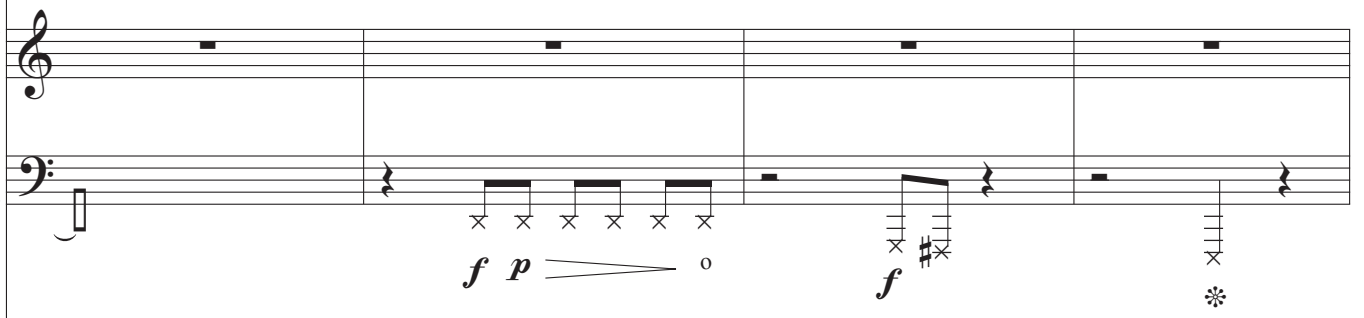
Pno. 

Vib. 

21

T. Sx. 

E. Gtr. 

Pno. 

Vib. 

Red.

25

T. Sx. *p* *mp*

E. Gtr. *mf* off

Pno. *mp* *mp* mute with hand *f*

Vib. *f* *f p* *f p* *f p* *f p* *f p* *f p*

29

T. Sx. *f* *mf*

E. Gtr. *f* *mf* pick slide

Pno. *f* *p* repeatedly strike strings with palm freely pluck, strum, tap and scrape strings inside piano

Vib. *f* 3

10
33

T. Sx.

E. Gtr.

Pno.

Vib.

thump fist against body

pick slide

mp

f

f

p

mute with hand

strike and strum lowest strings inside piano

ff

f

mp

f

mf

35

T. Sx.

E. Gtr.

Pno.

Vib.

p

f

mp

mf

played normally on keys

ff

mf

f

37

T. Sx. *f* *p* C Bb (22)

E. Gtr. *f*

Pno. slowly scrape string with guitar pick *f* *ff* *

Vib. 3 3

39

T. Sx.

E. Gtr.

Pno. improvise freely inside piano *cresc.*

Vib. *Red.* 3 3 *f* mute with hand

12
41

T. Sx.

E. Gtr.

Pno.

Vib.

p \rightrightarrows *f*

mf

ff
* Leo.

f

B

T. Sx.

E. Gtr.

Pno.

Vib.

thump fist
against body

mp

L.V.

mf

*
mute with hand

mf
Leo.

49

T. Sx.

E.Gtr.

Pno.

Vib.

p

pick slide

mp

mf

mp

mf

mf

53

T. Sx.

E.Gtr.

Pno.

Vib.

f

pick slide

mp

mf

p

pp

ff

mf

57

T. Sx. *f* *mp*

E.Gtr. *f* pick slide *f*

Pno. *mf* *ff* *mf*

Vib. *pp* *ff*

61

T. Sx. *p* *p*

E.Gtr.

Pno. *detached, percussive*

Vib. *f*

63

T. Sx.

E.Gtr.

pick slide

Pno.

Vib.

65

T. Sx.

E.Gtr.

SE capturing each note in additive harmony

Pno.

Leo.

Vib.

16
67

T. Sx.

E.Gtr.

Pno.

Vib.

f

muted

f

69

T. Sx.

E.Gtr.

Pno.

Vib.

mp *f*

f *p*

71

T. Sax. *f* *mp* *f*

E.Gtr.

Pno.

Vib.

73

T. Sax. *f*

E.Gtr.

Pno. *ff*

Vib.

18

75

T. Sx.

E.Gtr.

Pno.

Vib.

T. Sx.

E.Gtr.

Pno.

Vib.

very slow pick slide
light overdrive

off

play repeatedly,
improvising rhythm freely



mf

ff

pick slides starting controlled and slow, growing faster, louder, more unweildy
overdrive remains on throughout

play freely inside piano becoming
increasingly louder and more chaotic

79

T. Sx.

E.Gtr.

Pno.

Vib.

f

>

81

T. Sx.

E.Gtr.

Pno.

Vib.

f

f

>

⑥

20

83

Fingering diagram for the first system: A B note on the staff with a circled 30 above it and a circled 6 below it. To the left, a diagram shows the string layout with dots for frets and a circled B.

T. Sx. *f*

E.Gtr.

Pno.

Vib.

85

Fingering diagram for the second system: A B note on the staff with a circled 6 above it. To the left, a diagram shows the string layout with dots for frets and a circled B.

T. Sx. *f*

E.Gtr.

Pno.

Vib.

87

T. Sx.

ff

E.Gtr.

Pno.

Vib.

89

T. Sx.

ff

E.Gtr.

Pno.

Vib.

22
91

T. Sx.

Staff for T. Sx. (Tenor Saxophone) in treble clef, key signature of one sharp (F#). The first measure contains a whole note chord consisting of a quarter rest, a quarter note F#, and a quarter note G. The second measure contains a whole rest.

E. Gtr.

Staff for E. Gtr. (Electric Guitar) in treble clef. The first measure contains four diagonal slash marks. The second measure contains a whole rest.

Pno.

Grand staff for Pno. (Piano) with treble and bass clefs. The first measure contains diagonal slash marks in both staves. The second measure contains a whole rest in the treble staff and a whole note chord in the bass staff. Above the bass staff, the text "let ring" is written. Below the bass staff, there is a vertical line with an 'x' at the bottom and the dynamic marking *f*.

Vib.

Staff for Vib. (Vibraphone) in treble clef. The first measure contains a sequence of eighth notes: G, A, B, C, D, E, F, G. The second measure contains a whole rest. The dynamic marking *ff* is placed below the first measure.