

{it's all the same until it isn't}

Gunter Gaupp

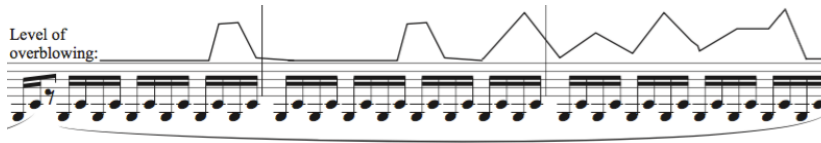
C Score

Flute
Bb Clarinet
Piano
Double Bass

Performance Notes:

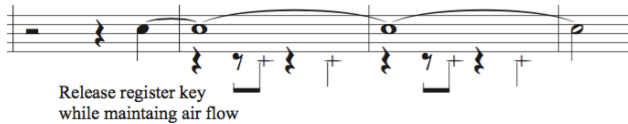
Bb Clarinet:

The clarinet has a section that utilizes rapid shifts in overblowing. The notated pitches should be fingered while the jagged line is used to indicate the approximate level of overblowing:



The lowest points on the line are the normal fundamentals and the highest are the highest possible overblown harmonic. The resulting pitches should sound unwieldy with random honks and squeaks.

Another passage in the clarinet uses the release of the register key to quickly drop the pitch of a sustained note. The register key should be released and immediately returned on the beats indicated by the + noteheads.



Double Bass:

The level of bow pressure is indicated with this symbol above the staff:



Written April 2018

Premiered July 2018 by Ensemble PHACE

Duration: Aprox. 7.5 minutes

It's All the Same Until It Isn't

Gunter Gaupp

♩ = 105

Flute

Air sounds

f

ta - ka - ta

ff

Tongue ram

Clarinet in B \flat

Air sounds

f

Tongue slap

ff

Piano

Double Bass

Fl.

ta - ka - ta

f

mp

f

ta - ka - ta

B \flat Cl.

mp

f

Pno.

D.B.

Very slow bow-wispy, gravely sound

pp

L.H pizz.

Bow just past bridge sul G, mute strings

pp

Fl.

ff

f

B \flat Cl.

Level of overblowing:

mp

pp

f.t

Pno.

D.B.

25

Fl.

B> Cl.

Pno.

D.B.

< f *p* *f*

Level of overblowing:

32

Fl.

B> Cl.

Pno.

D.B.

mp *ff* *p*

p *ff* *mf*

mf *pp*

pizz. *arco*

38

Fl.

B> Cl.

Pno.

D.B.

mp *f*

f *Normal tone*

p *ff* *pp*

mf *ff* *pp*

pizz. *arco*

43

Fl. *mf*

B♭ Cl. *mp* *f*

Pno. *mf* *f*

D.B. *mp* *f* *p*

pizz. arco

8va - 1

47

Fl. *f* *mf*

B♭ Cl. *f*

Pno. *f* *mf*

D.B. *p*

pizz. arco

8va - 1

51

Fl. *mp* *f* *mp*

B♭ Cl. *mp* *f* *mp*

Pno. *f* *p*

D.B. *f*

pizz.

8va - 1

55 Fl. *f.t*
 B> Cl. *fp*

55 Pno. *ff* *mp* *p*
 8va

55 D.B. *p*
 arco

59 Fl. *ff* *mp* *f* *mp* *f* *mp*
 B> Cl. *f* *mf*

59 Pno. *f* *p* *f* *p*
 8va

59 D.B. *p*
 Bow just past bridge sul G, mute strings

64 Fl. *f* *mp* *f* *mp* *f*
 B> Cl. *ff* *mf*
 Air sounds

64 Pno. *f* *mp*
 *

64 D.B. *mf*
 pizz.

This musical score page contains measures 68 through 76. It is arranged in four systems, each with four staves: Flute (Fl.), B♭ Clarinet (B♭ Cl.), Piano (Pno.), and Double Bass (D.B.).

- System 1 (Measures 68-72):**
 - Fl.:** Measure 68 has a rest. Measure 69 has a rest. Measure 70 has a melodic phrase starting with a *mp* dynamic.
 - B♭ Cl.:** Measures 68-72 feature a rhythmic pattern of eighth notes with accents. Dynamics include *subito p* and *mf*.
 - Pno.:** Measures 68-72 feature a rhythmic pattern of eighth notes in the right hand and bass notes in the left hand. Dynamics include *f*, *mp*, and *ff*.
 - D.B.:** Measures 68-72 feature a bass line with a *f* dynamic and a *pizz.* marking. Measure 72 has an *arco* marking and a *p* dynamic.
- System 2 (Measures 73-76):**
 - Fl.:** Measures 73-76 feature a melodic line with accents. Dynamics include *f*.
 - B♭ Cl.:** Measures 73-76 feature a melodic line with accents.
 - Pno.:** Measures 73-76 feature a rhythmic pattern of eighth notes. Dynamics include *f*, *mp*, and *ff*.
 - D.B.:** Measures 73-76 feature a bass line with a *mf* dynamic and a *pizz.* marking.
- System 3 (Measures 76-79):**
 - Fl.:** Measures 76-79 feature a melodic line with accents.
 - B♭ Cl.:** Measures 76-79 feature a melodic line with accents.
 - Pno.:** Measures 76-79 feature a rhythmic pattern of eighth notes. Dynamics include *f*, *p*, and *ff*.
 - D.B.:** Measures 76-79 feature a bass line with a *mf* dynamic and an *arco* marking.

79

Fl.

B♭ Cl.

Pno.

D.B.

ff

ff

f

p

ff

pizz.

arco

ff

f

Subtone

p

83

Fl.

B♭ Cl.

Pno.

D.B.

Normal tone

Subtone

90

Fl.

B♭ Cl.

Pno.

D.B.

f

ff

mp

Normal tone

Release register key while maintaining air flow

pizz.

mf

Air sounds with rapid key clicks

99

Fl. *f* *p* *ff* *mp* *ff* *p*

B♭ Cl. *f* *mf*

Pno. *f pp* *f*

D.B. *pp*

With rapid key clicks

Bow just past bridge sul G, mute strings

pizz.

107

Fl. *mf* *p* *sf* *p* *f*

B♭ Cl. *f*

Pno. *pp* *f pp* *f pp* *mp*

D.B. *mf* *p* *mf*

(8va)

arco

pizz.

113

Fl. *ff* *p* *ff* *mp* *ff* *mp*

B♭ Cl.

Pno.

D.B. *p*

arco

118

Fl. *ff* *mf* *ff* *mf*

B> Cl. *mf* *subito p*

Pno. *f mp f p ff p f mp*

D.B. *pp* *p* *ff*

Bow just past bridge sul G, mute strings

arco

123

Fl. *ff* *mf* *ff*

B> Cl. *mf*

Pno. *f mp*

D.B. *p* *f* *pizz.*

126

Fl. *mf* *mp* *f* *mp* *p*

B> Cl. *mf*

Pno. *mf mp f mp p*

D.B. *f* *mp*

Air sounds

arco

141

Fl.

B> Cl.

Pno.

D.B.

f *mf* *ff* *mf*

p *mf* *p*

pizz. arco pizz. arco pizz.

ff *mf* *ff* *mf* *f*

148

Fl.

B> Cl.

Pno.

D.B.

p *f*

f *mf*

mf

arco *mf*

153

Fl.

B> Cl.

Pno.

D.B.

f *ff* *f*

Air sounds

ff *f*

ff *f*

arco

159

Fl. *mp* *ff* Air sounds

B♭ Cl. *mp*

Pno. *8va* *8va* *8va*

D.B. *ff* *pizz.* *arco* *f*

165

Fl. *mp* *mf*

B♭ Cl. *mp*

Pno. *8va* *ff* *mf* *f* *mf*

D.B. *ff* *pizz.* *arco* *mf*

This musical score page contains measures 171 through 184, arranged in four systems. Each system includes parts for Flute (Fl.), B♭ Clarinet (B♭ Cl.), Piano (Pno.), and Double Bass (D.B.).

- System 1 (Measures 171-174):** Flute part begins at measure 171 with a *ff* dynamic, followed by a *mf* section. B♭ Clarinet part starts at measure 171 with a *f* dynamic. Piano part begins at measure 171 with a *f* dynamic. Double Bass part begins at measure 171 with a *f* dynamic and features a crescendo hairpin leading to a *mp* dynamic at the end of the system.
- System 2 (Measures 175-178):** Flute part starts at measure 175 with a *ft* dynamic, followed by a *mp* section. B♭ Clarinet part starts at measure 175 with a *f* dynamic. Piano part begins at measure 175 with a *mp* dynamic, followed by *ff* and *f* dynamics. Double Bass part begins at measure 175 with a *f* dynamic.
- System 3 (Measures 179-182):** Flute part starts at measure 179 with a *mp* dynamic. B♭ Clarinet part starts at measure 179 with a *f* dynamic. Piano part begins at measure 179 with a *f* dynamic. Double Bass part begins at measure 179 with a *f* dynamic.
- System 4 (Measures 183-184):** Flute part starts at measure 183 with a *mp* dynamic. B♭ Clarinet part starts at measure 183 with a *f* dynamic. Piano part begins at measure 183 with a *mp* dynamic. Double Bass part begins at measure 183 with a *f* dynamic, followed by a *ff* dynamic.

Additional markings include *8va* for the piano part in measures 171 and 183, and *pizz.* for the double bass part in measure 183. A triplet of eighth notes is marked with a '3' in measure 178 of the flute part.

183

Fl. *f*

B♭ Cl. *ff* *f*

Pno. *f* *ff* *f* *mp* *f*

D.B. *f* arco

Hold sustain pedal until marked release in m198

188

Fl.

B♭ Cl.

Pno. *8va*

D.B. pizz. arco

